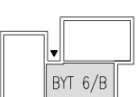
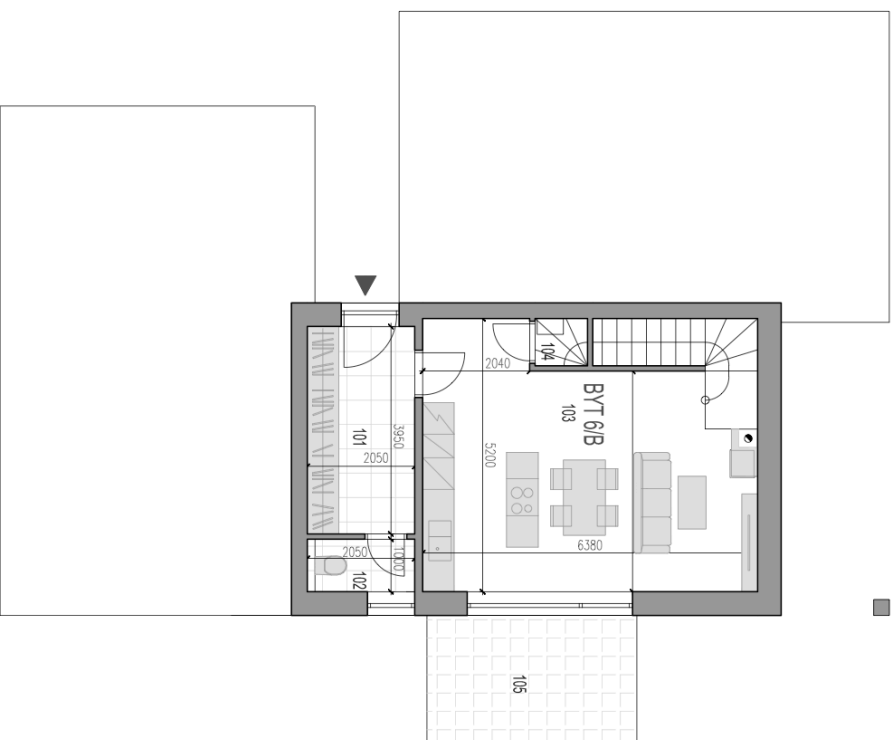


BYT 6/B

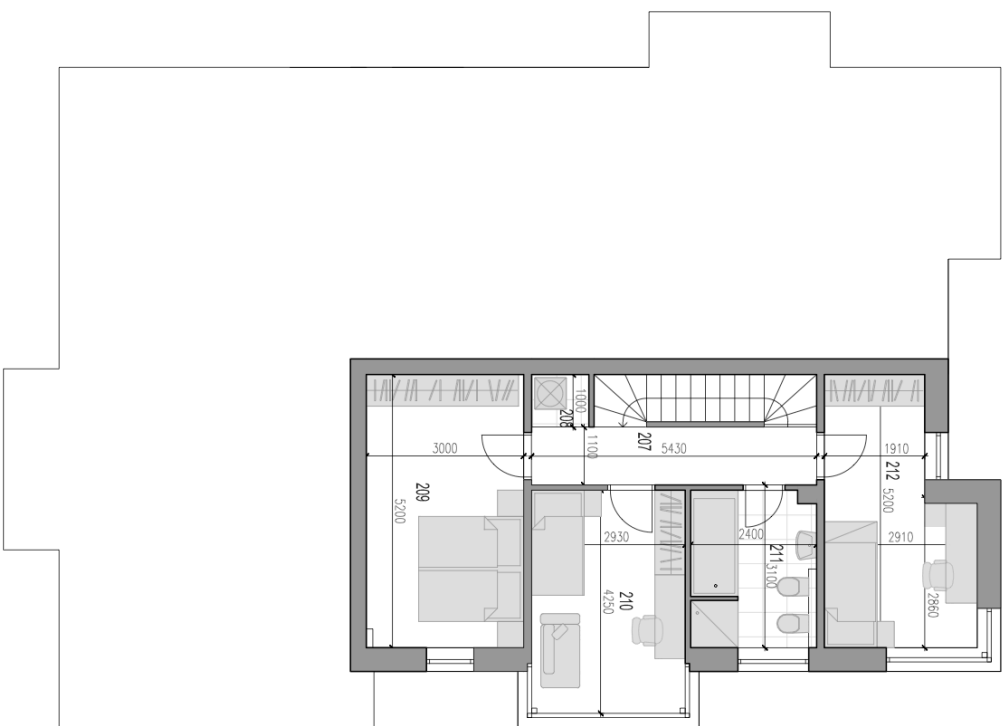
BYT 4+HK
CELKOVÁ VÝMERA.....93,4m²

1. NAOZEMNÉ PODLAŽIE

BYT 6/B	38,7m ²
101 PREDISIEN	8,1m ²
102 WC	2,0m ²
103 OBÝVAČIA IZBA S KK	32,2m ²
104 TZB	0,9m ²
105 TERASA	10,0m ²



RR
ROVINKA
PRI HRÁDZI

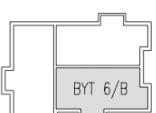


BYT 6/B

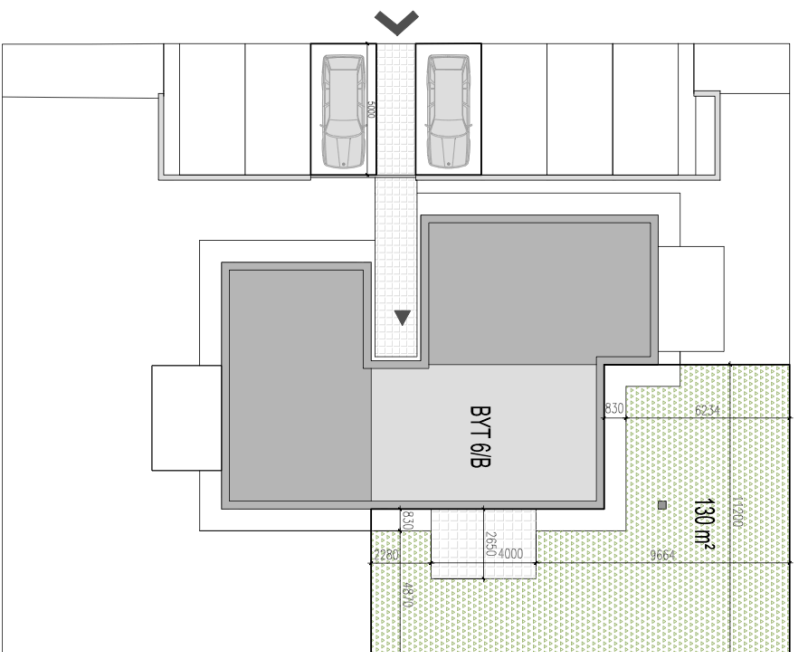
BYT 4+HK
CELKOVÁ VÝMĚRA.....93,4m²

2.NADZEMNĚ PODLAŽÍE

BYT 6/B	54,7m ²
201 CHODBA	6,0m ²
202 TZB	1,1m ²
203 SPALNA	15,6m ²
204 IZBA	12,4m ²
205 KÚPELNA	6,5m ²
206 IZBA	12,7m ²

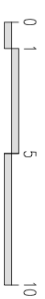
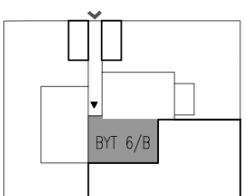


RR
ROVINKA
PRI HRÁDZI



RODINNÝ DOM 6

BYT 6/B
CELKOVÁ VNÍMĚRA.....130,0m²



RR
ROVINKA
PŘI HRÁDZI